

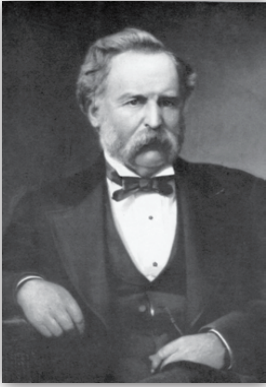
# Sedalia Missouri VISITORS GUIDE

Come, Stay, Explore, Smile,  
Snap, Post, Repeat.



- Tour a castle on the hill
- Stroll downtown Sedalia, absorb the atmosphere and admire the architecture
- View works of master contemporary artists
- Follow footsteps of the king of ragtime
- Dine in a railroad dining car
- Stroll through Liberty Rose Garden
- Shop local art galleries
- Eat a guberburger
- Visit Mr. Bothwell's bees
- Make the "hook 'em horns" symbol with the bronze statues at the Trail's End monument
- Find the misspelled word on the Rag-Tag sculpture at the Katy Depot
- Pedal out to Cloverdell Park on the Katy Trail
- Snap a photo of the B-2 Bomber in flight
- Visit a natural prairie at Hi-Lonesome
- Ride the Liberty Train at Liberty Park
- Catch a ballgame at the historic Liberty Park Stadium, a WPA project
- Admire the butter cow at the Missouri State Fair
- Catch a firefly
- Listen for a whip-poor-will
- Watch a play at the Liberty Center
- Enjoy live music at the Scott Joplin Ragtime Festival
- Visit the first Carnegie Library, first built west of the Mississippi River
- Count the bicycle sculptures placed along the public art trail

## QUEEN CITY OF THE PRAIRIES



*General George R. Smith*

In 1857, General George R. Smith founded “Sedville,” a name derived from his daughter Sarah’s nickname, “Sed.” The name of his proposed new prairie town would later be refined to the more lyrical name – Sedalia.

Sedalia is a product of the railroad. For more than a century, Sedalia’s history and fortunes were tied to the railroads that brought prosperity and urban industrial culture.

Both the Missouri Pacific and Missouri-Kansas-Texas (KATY) Railroads were responsible for 90% of Sedalia’s economy generated by large repair shops, passenger and freight depots, an employee hospital, telegraph schools and stockyards.

As a regional market center, Sedalia serves as the county seat of Pettis County (estimated population of 50,000). Our diverse economic base is supported by Bothwell Regional Health Center, State Fair Community College, Missouri State Fairgrounds, growing retail and professional services, strong visual and performing arts programming, one of the largest per-capita manufacturing employers in the state, and nearby Whiteman Air Force Base and Truman Lake’s recreational area.

A designated Sedalia Heritage Trail begins at Sedalia’s Welcome Center located at the Historic Katy Depot. It winds through Sedalia’s Downtown Historic District where Scott Joplin composed and performed, past the first Carnegie Library west of the Mississippi River, and through Liberty Park where the first fairs in Pettis County were held. The Trail continues on through the State Fairgrounds Historic District and onto the campus of State Fair Community College, highlighting the Daum Museum of Contemporary Art. A self-guided tour brochure introduces more than 64 historic structures to give a greater sense of Sedalia’s heritage.

The following pages offer a suggestion of those “must see” attractions and “must do” events.

# 4 SEDALIA'S WELCOME CENTER



## Historic Katy Depot

Open Mon – Sat  
9 am - 4 pm

Closed weekends  
Jan - Mar

### Make the Depot the First Stop on Your Sedalia Adventure.

**T**his restored historic landmark is both a symbol and an artifact of Sedalia's story. Built in 1896, the Katy Depot served as a train passenger depot and division point offices for the M-K-T Lines.

Today the Katy Depot serves as Sedalia's official Welcome Center, providing guests with a staffed information center, gift shop, exhibit gallery, and event space.

The feature exhibit "Sedalia and the Railroad" includes a short DVD, as well as revolving exhibits telling about other aspects of our past. In addition to self-guided tours, docent-led group tours can be arranged in advance.

The Katy Depot sits at mile marker 227 on the Katy Trail and is a major full-service trailhead with a bike shop.

The Railway Express Building will soon transition into a Toy and Model Train Exhibit. The exhibit, dedicated to Robert Stevens, first general manager of the MKT Railroad, will become the center of a railroad-themed education and activity schedule in conjunction with MoPac Caboose 12099.



*Stroll along replicas of a railroad owner's home, railroad worker's home, passenger depot and rail repair shops, local church, school and commercial building that provide a sense of the Sedalia of yesteryear.*



600 East Third Street • 660-826-2932

katydepotsedalia@gmail.com • www.katydepotsedalia.com

## Downtown Sedalia

**D**iscover the passion of downtown Sedalia. The renaissance of the national historic district is in full display in its flag-lined streets and shops full of great discoveries and welcoming staff. Graced with the majestic historic hotel, art galleries and new retail shops and dining opportunities, the Avenues create the perfect setting for a relaxing getaway. Learn more about special events and news from the district by visiting [www.theavenuessedalia.com](http://www.theavenuessedalia.com) or visiting us on Facebook.



**T**raveling Sedalia's public art trail, you are about to experience a wonderful array of sculptures, murals, and performances.



### **Barbara Manes Campbell Murals**

Forty-two murals line the walls of the third floor Circuit Courtroom of the Pettis County Court House at 400 South Ohio.



**Eric James Bransby Murals** are located in the Municipal Building at 200 South Osage.



## The Hayden Liberty Center

### Community Theatre

The center offers local thespians the opportunity to showcase their talents via locally produced shows. It also offers students the opportunity to shine onstage during its summer junior theatre productions. In addition to locally produced shows, the stage also hosts professional shows and a film series each year.

### Community Art Gallery

The art gallery space now offers three galleries and showcases local and area artists' works.

The Liberty Center is proud to be the leader of the Sedalia Cultural Arts Campaign. Working to ensure a celebration of all disciplines of the arts, we're sure you will find something that you will enjoy during your visit to Sedalia.

660-827-3228 • [lcaa@iland.net](mailto:lcaa@iland.net) • [www.lcaasedalia.com](http://www.lcaasedalia.com)



Photos by Kevin Walker Photography



## The Sedalia Symphony Society

The Sedalia Symphony is celebrating its 83rd season making it the second oldest performing orchestra west of the Mississippi. The orchestra presents three concerts per season with guest artists, as well as a Christmas POPS concert and an annual performance of *Handel's Messiah*. The orchestra is composed entirely of volunteer musicians from Sedalia and the surrounding communities. During its existence there have only been four conductors.

[SedaliaSymphonyOrchestra.com](http://SedaliaSymphonyOrchestra.com).



## Scott Joplin Ragtime Festival

*A celebration of the music, the man and the place where it began.*



**F**or more than 35 years, Sedalia has hosted performers from around the world who celebrate the King of Ragtime's music.

Sedalia's Ragtime Festival is held annually in late spring. During that time, performers and aficionados alike converge on Sedalia to celebrate.

Our musical heritage comes alive where Scott Joplin and his "Maple Leaf Rag" made American Music History.

The four-day festival is packed with rattling good fun... concerts feature Ragtime Legends and Festival Favorites ... open-air venues feature the up and coming ragtime performers



... symposia provide insights into the musicology and offer continuing education credits ... special events include the Joplin Footsteps Tour ... and the ever-popular Cakewalk Dance.

Sedalia was indeed a fascinating place in the 1880s when Scott Joplin arrived as a young man. The Ragtime Visitors Guide,

available at the Welcome Center, provides a driving tour of the places he lived and worked, as well as other ragtime heritage sites. Listen for the notes of ragtime tunes from long ago as you visit each stop.

The Scott Joplin International Ragtime Music Festival is recognized as the premier cultural arts event celebrating this unique musical heritage.

## Bothwell Lodge State Historic Site & State Park

### Summer Hours

**April 1 – September 15**

Tours offered on the hour.

Mon, Thurs. – Sat.

10:00 a.m. – 3:00 p.m.

Sunday: 11:00 a.m. – 3:00 p.m.

No tours Tues. or Wed.

### Winter Hours

**Sept. 16 – March 31**

Tours offered on the hour.

Friday, Saturday, & holiday

Mondays: 10:00 a.m. – 3:00 p.m.

Sunday: 11:00 a.m. – 3:00 p.m.

Tours begin on the hour. Group

tours require two week advance notice.

No tours Tuesday, Wednesday and

Thursday.

*Facility is not ADA accessible.*

19349 Bothwell State Park Road

7 miles north just off of

Highway 65



**S**itting high atop a scenic bluff seven miles north on Highway 65, the massive stone Bothwell Lodge was built between 1897 and 1928 by one of Sedalia's greatest benefactors, John Homer Bothwell. It was, in fact, Bothwell's efforts that eventually landed the Missouri State Fair and the Missouri Pacific shops in Sedalia. Bothwell Regional Health Center, the Bothwell School, and the Hotel Bothwell also owe their existence to this visionary philanthropist.

660-827-0510 • [www.mostateparks.com/bothwell.html](http://www.mostateparks.com/bothwell.html)

## Sedalia Parks

**T**he Sedalia Parks & Recreation Department oversees over 300 acres of park land and maintains 7 parks: Liberty, Centennial, Clover Dell, Hubbard, Housel, Katy, and Vermont Park. A wide array of sports, recreation activities, fitness classes, lessons, and special events are available for all area citizens. Open space, parks, and trails provide opportunities to enjoy the natural beauty of Sedalia. Our three largest parks, Clover Dell, Centennial and Liberty, feature tennis courts, softball and soccer fields, sand volleyball courts, shelter houses, playgrounds, two fishing lakes, basketball courts and plenty of picnic areas. Centennial and Liberty Parks also are home to our two outdoor aquatic facilities. For more information, call 660-826-4930 or visit [www.sedaliaparks.com](http://www.sedaliaparks.com)

## Leisure Park

**M**iniature golf, arcade and Go-Kart race track.

3208 S Ingram. Open Spring through October. Call for hours.  
660-826-0999





## Fairgrounds Historic District



**T**he Missouri State Fairgrounds Historic District contains a significant collection of early 20th century architecture, with 66 buildings and structures listed on the National Register of Historic Places. The architectural styles range from eclectic variations of the Romanesque Revival to Art Deco / Art Modern. Nearly all of the original significant structures remain in use today. Over the years the historic fairgrounds have hosted four U. S. Presidents, an airplane exhibition in 1909 by the Wright brothers, and exhibits of Missouri's best agricultural practices. The Missouri State Fairgrounds is one of only five historical state fairgrounds left in the United States today.

[mostatefairfoundation.net](http://mostatefairfoundation.net) • 660-530-5620



Photo by Mark Hammond

## Starline Brass Trail's End Plaza

Missouri State Fairgrounds  
corner of 16th Street and  
Highway 65.

Dial **660-202-1156** for  
**Guide by Cell** - for  
information about Trail's  
End and a welcome by  
Country Music Hall of  
Famer, **Leroy Van  
Dyke**.  
[www.thetrailsend.org](http://www.thetrailsend.org)

**T**he Historic Sedalia Trail, often referred to in the popular 1960's TV series *Rawhide*, was actually a branch of the old Shawnee Trail. Many cattle drives followed this trail north from Texas to bring the famed longhorn cattle to market. Sedalia was one of the earliest cowtowns to which trail bosses did 'head 'em up and move 'em out.



## Missouri State Fairgrounds

2503 West 16th Street

(660) 530-5600 • 1-800-422-FAIR

### Museum Hours

Admission is free.

Open daily during the annual State Fair in August and other times by appointment only.

Group tours require advanced notice.

Admission is free.

Museum Phone:  
660-530-5620



*Year-round events include livestock and horse shows, festivals, camping rallies and more.*

Established in 1899, the Missouri State Fairgrounds is one of the oldest in the nation and serves as a premier agriculture showcase for the Midwest. The Fairgrounds, which covers 396 acres are open year-round, providing facilities for horse and livestock shows, art and craft festivals, camping rallies, weddings/receptions and other events. The Katy Trail State Park runs along the south side of the grounds and is within easy biking distance of the 2,200 site campground. During the Fair each August, approximately 350,000 visitors enjoy agriculture, educational and recreational activities, a carnival midway and musical entertainment.

From the historic structures listed on the National Historic Register (oldest on the grounds dates back to 1903) to newer buildings and modern installations, there is beauty in the mix of old and new. The nationally recognized architecture on the Fairgrounds is unduplicated.

**2020 Fair - August 13 - 23**

**2021 Fair - August 13 - 22**

[www.mostatefairgrounds.com](http://www.mostatefairgrounds.com)

**Museum Website: [www.mostatefairfoundation.net](http://www.mostatefairfoundation.net)**



## State Fair Community College

3201 W. 16th Street, (660) 530-5800, [www.sfccmo.edu](http://www.sfccmo.edu)

### Music, Theatre and Fine Arts

SFCC's vibrant stream of cultural enrichment and entertainment includes children's theatre, dramas, comedies, musicals, concerts, and exhibits. [www.sfccmo.edu/the-arts](http://www.sfccmo.edu/the-arts)



### Sports

SFCC offers six exciting collegiate sports – men and women's soccer, men and women's basketball, softball and baseball. All teams participate in NJCAA Region 16 and the Missouri Community College Athletic Conference. [www.sfccmoroadrunners.com](http://www.sfccmoroadrunners.com)



### Daum Museum of Contemporary Art

Since 2002, Daum Museum, located on SFCC's Sedalia campus, features a diverse permanent collection and yearly offers three exhibition cycles and up to 15 exhibitions. Gunn & Smith Architects of St. Louis designed the museum, which includes nine exhibition galleries on three levels with a combined area of 9,300 square feet. Admission is free. [www.daummuseum.org](http://www.daummuseum.org)



**Hours:** Self-guided tours Tuesday to Friday, 11 a.m.-5 p.m.  
Saturday and Sunday, 1-5 p.m.  
Docent-guided tours upon request

## Katy Trail State Park

The Katy Trail runs 240 miles from Machens to Clinton along the original Missouri-Kansas-Texas Railway Lines.

It is the nation's longest rails-to-trails project to date.

It is also a part of the American Discovery Trail.

Sedalia offers two trailheads: The Katy Depot at 600 East Third (mile marker 227) and the equine trailhead on Clarendon Road (mile marker 229) at the State Fairgrounds. The Katy Depot trailhead is the only full-service location trail head on the Katy Trail offering trail information, overnight parking, nearby lodging, refreshments, gifts, souvenirs, and bicycle-related items.

Sedalia Katy Trailhead [www.katydepotsedalia.com](http://www.katydepotsedalia.com)

Missouri State Parks [www.katytrailstatepark.com](http://www.katytrailstatepark.com)

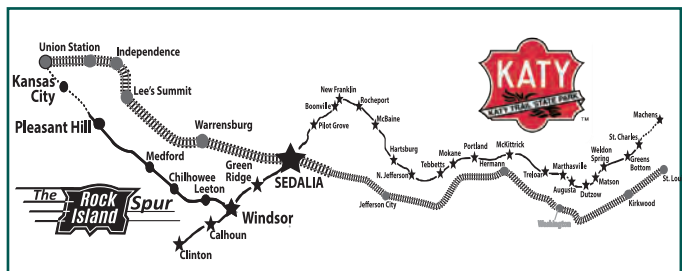


Katy Trail State Park. © Rachel West Cross

## Katy Trail State Park Rock Island Trail Spur

The newly-opened Rock Island Trail Spur is a 47.5 mile hiking and biking path that effectively connects the K.C. area all the way across the state to the St. Louis area via 300+ miles of dedicated trails on the combined Katy and Rock Island Trails.

The Rock Island trailhead located at Windsor—just off the Katy Trail, encompasses parts of the old Rock Island line and curves through gently sloping farm and woodlands and head northwest towards Kansas City and ending in Pleasant Hill, MO.



# GOOD FOOD EATS HERE 13

Applebee's .....	3320 W. Broadway .....	(660) 827-9910
Arby's Restaurant .....	2701 W. Broadway .....	(660) 829-4072
Asian Buffet .....	3406 W. Broadway .....	(660) 826-8886
Bandana's Bar-B-Q .....	2909 W. Broadway .....	(660) 851-0610
Bar-B-Que Pit Stop .....	1022 Thompson Blvd. ....	(660) 826-3635
Best Donuts .....	2103 S. Limit .....	(660) 281-0077
Brick Front Grill .....	3007 West Broadway .....	(660) 530-4052
Buffalo Wild Wings .....	4401 Wisconsin Ave .....	(660) 829-0350
Burger King .....	1101 S. Limit .....	(660) 826-1411
Casey's Carry Out Pizza .....	1601 E. Broadway.....	(660) 826-0722
Casey's Carry Out Pizza.....	716 W. 16th Street.....	(660) 827-3811
Casey's Carry Out Pizza .....	3500 W. 16th Street.....	(660) 826-9206
Casey's Carry Out Pizza .....	3050 S. Limit .....	(660) 826-5495
Clare's North 65 Café .....	22938 N. Hwy 65 .....	(660) 829-3322
Colton's Steak House & Grill.....	4101 W. Broadway .....	(660) 829-3737
Country Kitchen.....	2001 S. Limit .....	(660) 826-2001
Dairy Queen .....	1811 S. Limit .....	(660) 826-2301
David's Hot Dogs.....	23303 Valley View Lane.....	(660) 829-3753
Denny's.....	2401 W. Broadway .....	(660) 829-3704
Doo Southside.....	4860 S Limit Ave .....	(660) 827-3344
Domino's Pizza .....	3200 S. Limit .....	(660) 829-3030
El Espolon.....	3000 S. Limit (Hwy 65) .....	(660) 829-1723
El Tapatio .....	3000 S. Limit .....	(660) 827-5553
End Zone.....	3129 W. Broadway .....	(660) 829-3530
Fazoli's.....	2700 W. Broadway .....	(660)
Fit Food Fast, LLC.....	1522 Deven Dr.....	(660) 281-8544
Fitter's on 5th Street .....	500 South Ohio. ....	(660) 827-6500
Fortune Palace .....	3005 S. Limit .....	(660) 826-3299
Freddy's .....	3171 W. Broadway .....	(660) 826-5626
Golden Corral.....	2004 W. Broadway .....	(660) 829-1358
Goodcents Fresh Deli Subs.....	3400 W. Broadway.....	(660) 826-7900
Goody's Steak Burgers .....	901 S. Limit .....	(660) 826-2828
Hardee's Family Restaurants .....	715 E. Broadway.....	(660) 826-3559
Hardee's Family Restaurants .....	1400 S. Limit .....	(660) 826-0370
Ivory Grille.....	317 S. Ohio.....	(660) 829-0060

*Inside the Historic Hotel Bothwell*

# 14 GOOD FOOD EATS HERE

Jimmy John's.....	2923 W. Broadway Blvd .....	(660) 827-5646
Joy Wok.....	1975 W. Broadway.....	(660) 829-2226
Kehde's Barbeque .....	20th & Limit Ave .....	(660) 826-2267
Kentucky Fried Chicken .....	1513 S. Limit Ave.....	(660) 826-6912
LaMichoacara .....	417 W. 16th.....	(660) 826-7825
Lantern House .....	21744 West Hwy 50 .....	(660) 826-5500
LeMaire's Cajun Seafood House...	3500 W. Broadway Blvd .....	(660) 827-3563
Little Big Horn Cattle Co.....	150 S. Limit .....	(660) 826-8194
Little Caesar's Pizza .....	2125 W. Broadway Blvd .....	(660) 826-9450
Long John Silver's/A&W .....	922 S. Limit Ave.....	(660) 826-0880
Mazzio's Italian Eatery.....	1613 S. Limit Ave.....	(660) 827-9999
McDonald's .....	3101 W. Broadway Blvd.....	(660) 827-6411
McDonald's .....	1611 S. Limit .....	(660) 827-2733
Mighty Melt Sandwich & Spud Shop..	2402 W. Broadway Blvd ....	(660) 827-2290
Mizumbi Hibachi Express.....	3905 S. Limit .....	(660) 287-1523
Mi Pueblito .....	620 S. Osage.....	(660) 473-2859
No. 5 Bistro & Bar.....	108 W. Pacific.....	(660) TBA
Ox Horn Market & Deli.....	108 W. Pacific.....	(660) TBA
Ozark Coffee Co. & Roastery.....	106 W. 2nd .....	(660) 829-0393
Panera Bread Co. ....	3171 W. Broadway Blvd.....	(660) 827-7254
Papa Jake's Donut Shop .....	1200 W. 16th. ....	(660) 826-6176
Papa John's Pizza .....	2915 W. Broadway Blvd.....	(660) 826-6698
Papa Murphy's.....	3040 W. Broadway Blvd.....	(660) 827-5551
Perkin's Family Restaurant .....	1100 S. Limit Ave .....	(660) 826-1491
Pizza Hut.....	1422 S. Limit Ave .....	(660) 827-1111
Russell Stover Chocolates.....	1021 S. Limit Ave.....	(660) 829 0910
Scooter's Coffee.....	3507 W. Broadway.....	(660) 851-0220
Small Cakes .....	3040 W. Broadway Blvd. ....	(660) 951-1070
Sonic Drive-In.....	2800 S. Limit Ave.....	(660) 829-1211
Sonic Drive-In.....	300 W Broadway Blvd .....	(660) 826-1114
Starbuck's.....	3040 W. Broadway Blvd.....	(660) 829-0296
State Fair Carousel Dining .....	3120 S. Limit Ave .....	(660) 829-6100
<i>Inside Best Western</i>		
SFCC Food Service .....	3201 W. 16th.....	(660) 530-5800
Steak & Shake.....	Main Street & W. Hwy 50 .....	(660) 851-2264
Subway.....	2750 S. Limit Ave.....	(660) 829-4439
Subway.....	2700 W. Broadway Blvd.....	(660) 826-1964



# GOOD FOOD EATS HERE 15

Subway.....	100 W. Broadway Blvd.....	(660) 826-1120
TO5 Catering .....	12508 Longwood Road .....	(660) 864-7461
Taco Bell .....	820 S. Limit Ave.....	(660) 826-9147
Tacos El Charro.....	2121 W. Broadway Blvd. ....	(660) 553-5206
Wendy's .....	1301 S. Limit Ave.....	(660) 827-2220
Wood's Supermarket Deli .....	701 East Broadway Blvd .....	(660) 826-3509
Wood's Supermarket Deli .....	1400 S. Limit .....	(660) 826-5676
Yummy's Donuts.....	209 E. Broadway Blvd .....	(660) 553-5190

## MUST DO CALENDAR

For additional details consult the CVB website:  
[www.visitsedaliainfo.com](http://www.visitsedaliainfo.com)

### JANUARY

Daum Museum Exhibit  
Hayden Liberty Center Visual Arts Gallery — Art  
Opening

### FEBRUARY

Daum Museum Exhibit  
Hayden Liberty Center Visual Arts Gallery—Art Exhibit  
Sedalia Symphony — Heckart Performing Arts Center  
SFCC Theatre  
Chocolate Crawl —  
Downtown Sedalia  
AG Expo — MSF  
NFPBR Bullriding — MSF  
NFPB IPRA Professional Rodeo —  
MSF



### MARCH

Daum Museum Exhibit  
St. Patrick's Day Parade & Bed Races • Lion's Club Pub  
Crawl — Downtown Sedalia  
Hayden Liberty Center Performing Arts Center—Art  
Exhibit  
Hayden Liberty Center Visual Arts Gallery—Art Exhibit  
RK Shows Gun & Knife — MSF  
Show Me Crafters Show — MSF  
Boone County Draft Horse & Mule Sale - MSF

### APRIL

Daum Museum Exhibit  
Student Art Show — Daum Museum

# 16 MUST DO CALENDAR

Hayden Liberty Center Visual Arts Gallery—Art Exhibit  
SFCC Musical

Sedalia symphony — Heckart Performing Arts Center

D.A.R.E. Motor Head Madness Car Show — Downtown  
Sedalia

Kidabaloo — MSF

MOKAN Border Bonanza Show – MSF

Spring Fest — Downtown Sedalia



## MAY

Daum Museum Exhibit

Student Art show — Daum Museum

First Friday — Katy Depot

Hayden Liberty Center Visual Arts Gallery—Art Exhibit

Blacksmith Assoc of MO Trade show - MSF

Bijou at Bothwell Lodge

State Wrestling Competition — MSF

Scott Joplin International Ragtime  
Festival – Hayden Liberty  
Performing Arts Center /  
Downtown



Show-Me State Rodeo — MSF

## JUNE

Daum Museum Exhibit

Hayden Liberty Center Arts Gallery Art Exhibit

Scott Joplin International Ragtime Festival – Hayden  
Liberty Performing Arts Center / Downtown

Sedalia Concert Band – Liberty Park

Dream Factory Truck & Tractor Pull – MSF

Midwest Stud Ram Show - MSF

## JULY

Daum Museum Exhibit

Hayden Liberty Center Visual Art  
Gallery Art Exhibit

July Fourth Celebration – MSF

R. Woolery Memorial Pow Wow — MSF



## AUGUST

Daum Museum Exhibit

Hayden Liberty Center Visual Art Gallery Art Exhibit

## MISSOURI STATE FAIR -



*Celebrate the traditions of family farms and  
experience the magic of new millennium  
entertainment. Information call 800-422-3247  
or [www.mostatefair.com](http://www.mostatefair.com).*

Criterion Under the Lights—Beverage Garden • Music

# MUST DO CALENDAR 17

## SEPTEMBER

Daum Museum Exhibit  
Hayden Liberty Center Visual Arts Gallery Art Exhibit  
Bijou at Bothwell Lodge  
Boone County Draft Horse & Mule Sale – MSF  
Wine & Brews on the Avenues — Downtown Sedalia

## OCTOBER

Hayden Liberty Center Visual Arts Gallery Art Exhibit  
Mustang Car Show — Downtown Sedalia  
Fall Fest — Downtown Sedalia  
Daum Museum Exhibit  
Daum Escape — Daum Museum  
American Horseman Challenge – MSF  
Trick or Treat on the Avenues — Downtown Sedalia

## NOVEMBER

Daum Escape — Daum Museum  
Hayden Liberty Center Visual Arts  
Gallery Art Exhibit  
American Black Hereford National  
Show & Sale - MSF  
Show Me Crafters Show – MSF  
Thanksgiving Lighting & Fireworks  
Extravaganza — Downtown  
Sedalia



## DECEMBER

Daum Escape — Daum Museum  
Daum Escape — Daum Museum  
Hayden Liberty Center Visual Arts Gallery Art Exhibit  
Holiday Arts & Craft Show - SFCC  
Jingle on the Green – State Fair Community  
College Campus  
Holiday Concerts – SFCC



NFPB National Bull Riding —  
MSF  
Battle on the Katy Wrestling  
Tournament — MSF  
Chamber Christmas Parade -  
Downtown Sedalia

## Snapshot of Sedalia's Growth

### 1820-1840s

- Missouri established as state
- Pettis County formed; first county seat at Pin Hook and then Georgetown
- Early settlers moved from North Carolina, Tennessee and Kentucky, many seeking inexpensive land for their extended families

# 18

## 1850s-1860s

- Sedalia founded by George R. Smith
- Pacific Railroad arrived as economic base
- Civil War slowed and enhanced growth
- Functioned as Cattle Trail Head
- Became Pettis County Seat
- Early emphasis on arts through opera houses, theatre troupes, and music clubs

## 1870s-1890s

- MKT the second of four railroads arrived; growth of railroad-related businesses and institutions
- Library Association founded; functioned as Chamber of Commerce to attract businesses to Sedalia
- Expansion of education, such as telegraph schools, business colleges, private music schools
- Campaign for State Capital led to aggressive local promotion and to State Fair
- Further development of the arts: music clubs, private music schools, ragtime and Scott Joplin's historic contract for the Maple Leaf Rag

## 1900s-1910s

- Missouri State Fair began, showcasing agriculture
- Growth of Missouri Pacific Railroad shops
- Sedalia Public Library erected, first Carnegie Library built west of the Mississippi River

## 1920s-1930s

- Resurgence in building: new high school, banks, churches, and store buildings
- Life magazine declared Sedalia the city second-hardest hit by the Great Depression in the entire United States; five of seven Sedalia banks closed

## 1940s-1950's

- Sedalia Army Air Field opened in 1942 as a training base for glider pilots; named for George Whiteman in 1955
- Economic base began shifting from railroad to manufacturing with the opening of new factories
- MKT railroad shops became inactive; last MKT passenger train passed through Sedalia

## 1960s-1970s

- Selected as site for Minuteman Missile Complex, creating economic and population growth
- State Fair Community College opened
- Bothwell Lodge State Park opened
- Downtown Sedalia, Inc. formed to promote growth and business in the downtown area

## 1980s-1990s.

- Central Business and Cultural District formed to aid in historic and cultural preservation
- Formation of the Liberty Center Association for the Arts, restoration of the historic Liberty Theater
- MKT Railroad discontinued operations; Ted Jones supported rails-to-trails concept, resulting in Katy Trail State Park, creation of the Sedalia Heritage Foundation and restoration of the Katy Depot

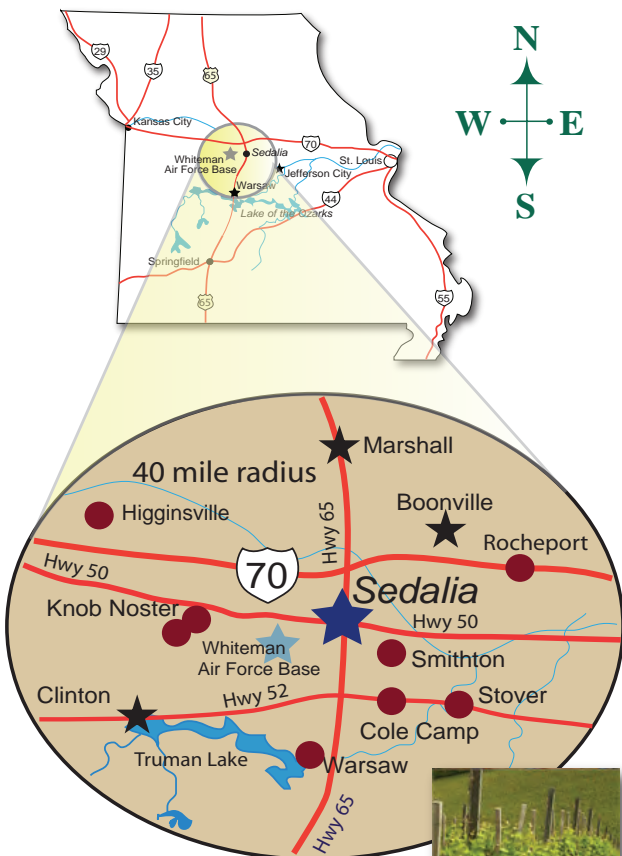
## 2000s-2010s

- Daum Museum of Contemporary Art and art gallery addition to Liberty Center constructed
- Trails End Monument to cattle drives completed

## 2020s

- Heckart Community Center (in process)

# AREA ATTRACTIONS 19



Arrow Rock		50 miles
Lake of the Ozarks		60 miles
Jefferson City		61 miles
Columbia		67 miles
Kansas City		88 miles
Springfield		118 miles
Branson		168 miles
St. Louis		191 miles

 **Wineries**

- Stover: Buffalo Creek Winery [buffalocreekwinery.com](http://buffalocreekwinery.com)
- Smithton: Wildlife Ridge Winery [wildliferidgewinery.com](http://wildliferidgewinery.com)
- Warsaw: Primitive Old Crow and Winery
- Rocheport: Les Bourgeois Vineyards [www.missouriwine.com](http://www.missouriwine.com)
- Cole Camp: Eichenberg Winery [eichenbergwinery.homestead.com](http://eichenbergwinery.homestead.com)
- Knob Noster: Bristle Ridge Winery [brvwine.com](http://brvwine.com)
- Montserrat: Montserrat Vineyards Kin [montserratvineyards.com](http://montserratvineyards.com)
- Higginsville: Arcadian Moon [arcadianmoon.com](http://arcadianmoon.com)



## Campgrounds

**Countryside RV Park** 5464 HWY 65 South, (817) 564-3036 - RV sites, electricity, toilet facilities, showers, handicap accessible, picnic tables, dump station, storm shelter, laundry, meeting room.

**Chaplin's RV Park** 4000 W. Main Street, (660) 826-8549, 660-596-2842 - Pull through sites, 30-50 amp electricity, open year round.

**Happy Acres RV Park** 22527 HWY 65 North, (660) 826-4046 - Call for information.

**Missouri State Fairgrounds** HWY 65 & 16th Streets, (660) 530-5600 - RV sites, tent sites, electricity, toilet facilities, showers, store nearby, handicap accessible, near the Katy Trail State Park.

## Transportation

Sedalia Regional Airport — 1900 East Boonville  
(660) 826-4128 Hours: 7 a.m. – 6 p.m. daily

Amtrak — 1-800-USA-RAIL (1-800-872-7245)

American Auto Rental — 2101 South Limit • (660) 827-5200

Enterprise Rent-A-Car — 800-736-8222 • (660) 827-3575

Sedalia City Bus — 107 W. Pacific St. • (660) 827-2611

The Bus — (660) 827-2611

ETS Taxi — 660-624-4120 • 1-800-544-2056

Transportation for Hire 660-281-7797

## Radio Stations

**KPOW 97.1 FM** – Classic Rock

**KDRO 1490 AM** – Country

**KDRO 97.7 FM** — Classic Rock

**KSIS 1050 AM** – News / Talk

**KSDL 92.3 FM** – Rock

**KXXK 105.7** – Country

## Weather

Weather Forecast — (660) 826-5747

Road Information — 1-800-222-6400

## Emergency

Emergencies — 911

Cellular: \*55 for Highway Patrol

Bothwell Regional Health Center — (660) 826-8833

AFC Urgent Care — (660) 951-1091

Sedalia Police Department — (660) 826-8100

Missouri State Highway Patrol — (660) 530-5515

Pettis County Sheriff's Dept. — (660) 827-0052



# LODGING

21

**American Inn** 1217 S. Limit, 660-826-2488 - 30 rooms, ADA accessible.

**Best Western** 3120 S. Limit 660-826-6100 • 877-826-6101 - 117 rooms, restaurant, hot breakfast, lounge, indoor pool, meeting rooms, group rates, ADA accessible.

**Super 7** 5650 S. Limit, 660-827-0215, 800-675-2518 - 24 rooms, group rates.

**Comfort Inn** 3600 W. Broadway, 660-829-5050, 800-228-5150 - 76 rooms, hot breakfast, indoor pool, meeting rooms, group rates, guest computer, hot tub, newly remodeled, on-site laundry facilities, high speed internet, individual microwaves and mini-fridge, HDTV, ADA accessible.

**Econo Lodge Truman Inn** 3501 W. Broadway, 660-826-8400 - 116 rooms, restaurant, lounge, banquet room, ballroom, indoor pool, hot tub, sauna, meeting rooms, group rates, ADA accessible.

**Hampton Inn** 3909 W 9th, 660-951-1163, 80 rooms, pool, fitness center, 750 sq. ft. meeting room, continental breakfast, ADA accessible.

**Holiday Inn Express & Suites** 4001 W. Broadway, 660-826-4000, 800-465-4329 - 76 rooms, hot breakfast, indoor pool, hot tub, business center, fitness center, meeting rooms, call for group rates, ADA accessible.

**Hotel Bothwell** 103 E. Fourth, 660-826-5588 - 48 rooms, restaurant, continental breakfast, lounge, meeting rooms, group rates, ADA accessible. Listed on the National Registry of Historic Places.

**Motel 6** 3402 W. Broadway, 660-827-5890 83 rooms, group rates, high-speed wireless, ADA accessible, large vehicle parking.

**Budget Inn** 4710 S. Limit, 660-826-8662 - 13 rooms. Call for more information.


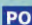
**Sunset Motel** 3615 S. Limit, 916-284-2100  
www.sunsetmotelsedalia.com - 22 rooms, free WiFi

## B & B

**Georgetown Country View Estates** 22378 Highway H, 660-287-3336 - Quiet get-a-way in a historic location! Featuring continental/full breakfast, TV, pool, hot tub, exercise room, pool table, and private baths in each room.

# National Historic District

-  Amtrak Station
-  Boonslick Regional Library
-  Liberty Center Association for the Arts
-  Pettis Co. Court House
-  Pettis Co. Sheriff Department
-  Rose Noland Black History Library
-  Scott Joplin Historical Marker
-  Sedalia Municipal Bldg./Police Dept.
-  Sedalia Public Library

-  **H** Bothwell Regional Health Center
-  **PO** United States Post Office

# Shopping

1. Thompson Hills Shopping Center
2. State Fair Shopping Center
3. Downtown Sedalia

# Attractions

1. Bothwell Loc
2. Daum Museu
3. Downtown H
4. Katy Depot H
5. Missouri Sta
6. Pettis Co. Hi



For information on area events, visit our website  
[www.visitsedaliamo.com](http://www.visitsedaliamo.com)





idge (6 miles North on Hwy 65)  
 um of Contemporary Art  
 Historic District  
 Heritage Site  
 ce Fairgrounds  
 Historical Society Museum

## Lodging

- |                           |  |
|---------------------------|--|
| 1. American Inn           | 8. Sunset Motel                                  |
| 2. Best Western           | 9. Super 8 Motel                                 |
| 3. Budget Host<br>Super 7 | 10. Holiday Inn<br>Express                       |
| 4. Comfort Inn            | 11. Georgetown<br>Country View<br>Estates (west) |
| 5. Hotel Bothwell         | 12. Georgetown<br>Inn (west)                     |
| 6. Truman Inn             |  |
| 7. Stardust Motel         |  |

## Parks

Sedalia Parks  
 Department  
 660-826-4930

- |                          |
|--------------------------|
| 1. Centennial Park       |
| 2. Clover Dell Park      |
| 3. Housel Park           |
| 4. Hubbard Park          |
| 5. Katy Park             |
| 6. Katy Trail State Park |
| 7. Leisure Park          |
| 8. Liberty Park          |
| 9. Vermont Park          |



East/West Boundary is Ohio Ave.  
 North/South Boundary is Main St.



Sedalia Convention & Visitors Bureau  
Sedalia Welcome Center - Historic Katy Depot  
600 East 3rd Street  
Sedalia, MO 65301

1800-827-5295

[www.visitsedaliamo.com](http://www.visitsedaliamo.com)

*Wish you were  
here!*