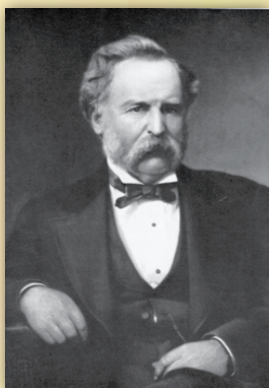


# Sedalia Missouri

VISITORS GUIDE



## 2 SEDALIA, QUEEN CITY OF THE PRAIRIES



*General George R. Smith*

In 1857, General George R. Smith founded “Sedville,” a name derived from his daughter Sarah’s nickname, “Sed.” The name of his proposed new prairie town would later be refined to the more lyrical name – Sedalia.

Sedalia is a product of the railroad. For more than a century, Sedalia’s history and fortunes were tied to the railroads that brought prosperity and urban industrial culture.

Both the Missouri Pacific and Missouri-Kansas-Texas (KATY) Railroads were responsible for 90% of Sedalia’s economy generated by large repair shops, passenger and freight depots, an employee hospital, telegraph schools and stockyards.

As a regional market center, Sedalia serves as the county seat of Pettis County (estimated population of 50,000). Our diverse economic base is supported by Bothwell Regional Health Center, State Fair Community College, Missouri State Fairgrounds, growing retail and professional services, strong visual and performing arts programming, one of the largest per-capita manufacturing employers in the state, and nearby Whiteman Air Force Base and Truman Lake’s recreational area.

A designated Sedalia Heritage Trail begins at Sedalia’s Welcome Center located at the Historic Katy Depot. It winds through Sedalia’s Downtown Historic District where Scott Joplin composed and performed, past the first Carnegie Library west of the Mississippi River, and through Liberty Park where the first fairs in Pettis County were held. The Trail continues on through the State Fairgrounds Historic District and onto the campus of State Fair Community College, highlighting the Daum Museum of Contemporary Art. A self-guided tour brochure introduces more than 64 historic structures to give a greater sense of Sedalia’s heritage.

The following pages offer a suggestion of those “must see” attractions and must do events.



## Historic Katy Depot

Open Mon – Sat

9 am - 4 pm

Closed weekends

Jan - Mar

### Make the Depot the First Stop on Your Sedalia Adventure.

**T**his restored historic landmark is both a symbol and an artifact of Sedalia's story. Built in 1896, the Katy Depot served as a train passenger depot and division point offices for the M-K-T Lines.

Today the Katy Depot serves as Sedalia's official Welcome Center, providing guests with a staffed information center, gift shop, exhibit gallery, and event space.

The feature exhibit "Sedalia and the Railroad" includes a short DVD, as well as revolving exhibits telling about other aspects of our past. In addition to self-guided tours, docent-led group tours can be arranged in advance.

The Katy Depot sits at mile marker 227 on the Katy Trail and is a major full-service trailhead with a bike shop.

The Railway Express Building will soon transition into a Toy and Model Train Exhibit. The exhibit, dedicated to Robert Stevens, first general manager of the MKT Railroad, will become the center of a railroad-themed education and activity schedule in conjunction with MoPac Caboose 12099.



*Stroll along replicas of a railroad owner's home, railroad worker's home, passenger depot and rail repair shops, local church, school and commercial building that provide a sense of the Sedalia of yesteryear.*



600 East Third Street • 660-826-2932

[katydepotsedalia@gmail.com](mailto:katydepotsedalia@gmail.com) • [www.katydepotsedalia.com](http://www.katydepotsedalia.com)



## Downtown Historic District

**E**xperience the renaissance of the historic downtown district as the region's center for cultural arts and urban dwelling.

The flag-lined streets with new streetscape and gateway construction serve to provide modern aesthetics to the more than 120 beautiful architectural treasures listed in the National

Register of Historic Places, dating from 1890 to 1940.



**T**raveling Sedalia's public art trail, you are about to experience a wonderful array of sculptures, murals, and performances.



### Barbara Manes Campbell Murals

Forty-two murals line the walls of the third floor Circuit Courtroom of the Pettis County Court House at 400 South Ohio.



### Eric James Bransby Murals

are located in the Municipal Building at 200 South Osage.





## The Hayden Liberty Center

### Community Theatre

The center offers local thespians the opportunity to showcase their talents via locally produced shows. It also offers students the opportunity to shine onstage during its summer junior theatre productions. In addition to locally produced shows, the stage also hosts professional shows and a film series each year.

### Community Art Gallery

The art gallery space now offers three galleries and showcases local and area artists' works.

The Liberty Center is proud to be the leader of the Sedalia Cultural Arts Campaign. Working to ensure a celebration of all disciplines of the arts, we're sure you will find something that you will enjoy during your visit to Sedalia.

660-827-3228 • [lcaa@iland.net](mailto:lcaa@iland.net) • [www.lcaasedalia.com](http://www.lcaasedalia.com)



Photos by Kevin Walker Photography



## The Sedalia Symphony Society

The Sedalia Symphony is celebrating its 83rd season making it the second oldest performing orchestra west of the Mississippi. The orchestra presents three concerts per season with guest artists, as well as a Christmas POPS concert and an annual performance of *Handel's Messiah*. The orchestra is composed entirely of volunteer musicians from Sedalia and the surrounding communities. During its existence there have only been three conductors.

[SedaliaSymphonyOrchestra.com](http://SedaliaSymphonyOrchestra.com).

## Scott Joplin Ragtime Festival

*A celebration of the music, the man and the place where it began.*



**F**or more than 35 years, Sedalia has hosted performers from around the world who celebrate the King of Ragtime's music.

Sedalia's Ragtime Festival is held annually the first weekend in June. During this weekend performers and aficionados alike converge on Sedalia to celebrate.

Our musical heritage is set alive where Scott Joplin and his "Maple Leaf Rag" made American Music History.

The four-day festival is packed with rattling good fun... concerts feature Ragtime Legends and Festival Favorites ... open-air venues feature the up and coming ragtime performers



... symposia provide insights into the musicology and offer continuing education credits ... special events include the Joplin Footsteps Tour ... and the ever-popular Cakewalk Dance.

Sedalia was indeed a fascinating place in the 1880s when Scott Joplin arrived as a young man. The Ragtime Visitors Guide,

available at the Welcome Center, provides a driving tour of the places he lived and worked, as well as other ragtime heritage sites. Listen for the notes of ragtime tunes from long ago as you visit each stop.

The Scott Joplin International Ragtime Music Festival is recognized as the premier cultural arts event celebrating this unique musical heritage.

## Bothwell Lodge State Historic Site & State Park

### Summer Hours

**April 1 – September 15**

Tours offered on the hour.

Mon, Thurs. – Sat.

10:00 a.m. – 3:00 p.m.

Sunday: 11:00 a.m. – 3:00 p.m.

No tours Tues. or Wed.

### Winter Hours

**Sept. 16 – March 31**

Tours offered on the hour.

Friday, Saturday, & holiday

Mondays: 10:00 a.m. – 3:00 p.m.

Sunday: 11:00 a.m. – 3:00 p.m.

Tours begin on the hour. Group  
tours require two week advance  
notice.

*Facility is not  
ADA accessible.*

19349 Bothwell State Park Road  
7 miles north just off of  
Highway 65

660-827-0510 • [www.mostateparks.com/bothwell.html](http://www.mostateparks.com/bothwell.html)



**S**itting high atop a scenic bluff seven miles north on Highway 65, the massive stone Bothwell Lodge was built between 1897 and 1928 by one of Sedalia's greatest benefactors, John Homer Bothwell. It was, in fact, Bothwell's efforts that eventually landed the Missouri State Fair and the Missouri Pacific shops in Sedalia. Bothwell Regional Health Center, the Bothwell School, and the Hotel Bothwell also owe their existence to this visionary philanthropist.

## Sedalia Parks

**O**ur three largest parks, Clover Dell, Centennial and Liberty, feature tennis courts, softball and soccer fields, sand volleyball courts, shelter houses, playgrounds, two fishing lakes, basketball courts and plenty of picnic areas. Centennial and Liberty Parks also have new aquatic swim facilities for all ages. Katy Park is home to the skateboard park. If you're a walking or jogging enthusiast, Centennial, Hubbard and Katy Parks have trails you will enjoy. Additionally, the Fred E. Davis Walking Track on West 16th Street is open to the public year-round. For more information, call 660-826-4930 or visit [www.sedaliaparks.com](http://www.sedaliaparks.com).

## Leisure Park

**M**iniature golf, arcade and Go-Kart race track.

3208 S Ingram. Open Spring  
through October. Call for hours.  
660-826-0999





## Fairgrounds Historic District



The Missouri State Fairgrounds Historic District contains a significant collection of early 20th century architecture, with 66 buildings and structures listed on the National Register of Historic Places. The architectural styles range from eclectic variations of the Romanesque Revival to Art Deco / Art Modern. Nearly all of the original significant structures remain in use today. Over the years the historic fairgrounds have hosted four U. S. Presidents, an airplane exhibition in 1909 by the Wright brothers, and exhibits of Missouri's best agricultural practices. The Missouri State Fairgrounds is one of only five historical state fairgrounds left in the United States today.

[mostatefairfoundation.net](http://mostatefairfoundation.net) • 660-530-5620



Photo by Mark Hammond

## Starline Brass Trail's End Plaza

Missouri State Fairgrounds  
corner of 16th Street and  
Highway 65.

Dial **660-202-1156** for  
**Guide by Cell** - for  
information about Trail's  
End and a welcome by  
Country Music Hall of  
Famer, **Leroy Van  
Dyke**.  
[www.thetrailsend.org](http://www.thetrailsend.org)

The Historic Sedalia Trail, often referred to in the popular 1960's TV series *Rawhide*, was actually a branch of the old Shawnee Trail. Many cattle drives followed this trail north from Texas to bring the famed longhorn cattle to market. Sedalia was one of the earliest cowtowns to which trail bosses did 'head 'em up and move 'em out.



## Missouri State Fairgrounds

2503 West 16th Street

(660) 530-5600 • 1-800-422-FAIR

### Museum Hours

During the Missouri  
State Fair Only —  
10:00 a.m. - 6:00 p.m.

Other times by  
appointment.

Group tours require  
advanced notice.

Admission is free.

Museum Phone:  
660-530-5620

The Fairground's 396 acres, listed on the National Register of Historic Districts, are the home of over 2,200 campsites and modern convention and agricultural facilities. From the Varied Industries Building—built in 1903, to the MFA Youth Livestock Arena—completed in 2013, the nationally recognized architecture on the Fairgrounds is unduplicated. The Womans Building, built in 1910 houses the State Fair Museum.

A variety of events are hosted on the Fairgrounds throughout the year, including livestock shows, camping rallies, sporting events, conventions/trade shows, and weddings/receptions. The Katy Trail State Park runs along the south side of the Fairgrounds and is within easy biking distance of the campsites.



*Year-round events include all types of livestock shows, special events, festivals and camper/RV jamborees.*

**2018 Fair - August 9 - 19**



[www.mostatefairgrounds.com](http://www.mostatefairgrounds.com)

Museum Website: [www.mostatefairfoundation.net](http://www.mostatefairfoundation.net)



© Josh Campbell  
Photography



© Sydney Brink

## Daum Museum of Contemporary Art

The Daum Museum collects, preserves, interprets and exhibits modern and contemporary works of art. It houses nine exhibition galleries on three levels with a combined area of 9,300 square feet. Through its exhibitions, programs and publications, the Daum sheds light on the stimulating complexity of contemporary art. The museum offers a temporary exhibition series that changes three times a year.

### Hours

Tuesday - Friday  
11:00 a.m. - 5:00 p.m.  
Saturday & Sunday  
1:00 p.m. - 5:00 p.m.

Admission is free.

Self-guided tours  
anytime.

Guided tours upon  
request.

Goddard Gallery is a smaller gallery that also hosts several exhibits each year.

[www.daummuseum.org](http://www.daummuseum.org)

## State Fair Community College Roadrunner Sports

Men's & Women's Basketball • Women's Volleyball

[www.sfccmo.edu](http://www.sfccmo.edu)



Photo by David Kopp

## SFCC Theatre & Music Programs

**SFCC** theatre students usually present four productions a year, plus a night of student directed, one-act plays. They also take a children's play to area schools. The music department hosts a series of noontime recitals, holiday concerts, and a show-choir competition. Check SFCC's calendar at [www.sfccmo.edu](http://www.sfccmo.edu) for exact dates and ticket prices.

**State Fair Community College (SFCC) Campus**  
3201 W. 16th Street • 660-530-5888



## Katy Trail State Park

The Katy Trail runs 240 miles from Machens to Clinton along the original Missouri-Kansas-Texas Railway Lines.

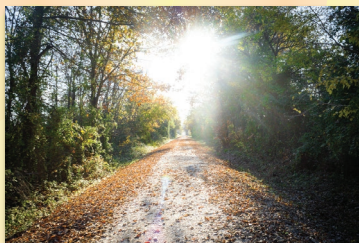
It is the nation's longest rails- to-trails project to date.

It is also a part of the American Discovery Trail.

Sedalia offers two trailheads: The Katy Depot at 600 East Third (mile marker 227) and the equine trailhead on Clarendon Road (mile marker 229) at the State Fairgrounds. The Katy Depot trailhead is the only full-service location trail head on the Katy Trail offering trail information, overnight parking, nearby lodging, refreshments, gifts, souvenirs, and bicycle-related items.

Sedalia Katy Trailhead [www.katydepotsedalia.com](http://www.katydepotsedalia.com)

Missouri State Parks [www.katytrailstatepark.com](http://www.katytrailstatepark.com)



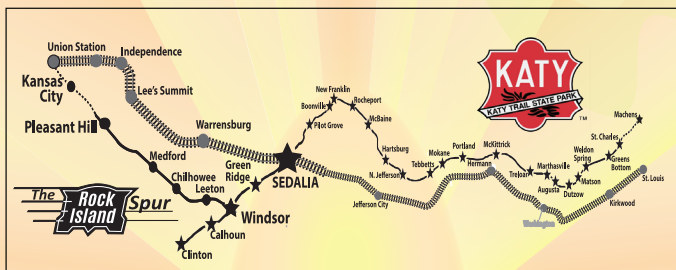
Katy Trail State Park. © Rachel West Cross

**Fischer Stables**, located at 22299 Sacajawea Road, offers four different boarding packages from stalls with attached outdoor paddocks to pasture boarding. The stables can provide hourly or daily rental of an outdoor or indoor lighted arena. Riding trails are available on the property with convenient access to the Katy Trail. 660-829-4677.

## Katy Trail State Park Rock Island Trail Spur

The newly-opened Rock Island Trail Spur is a 47.5 mile hiking and biking path that effectively connects the K.C. area all the way across the state to the St. Louis area via 300+ miles of dedicated trails on the combined Katy and Rock Island Trails.

The Rock Island trailhead located at Windsor—just off the Katy Trail, encompasses parts of the old Rock Island line and curves through gently sloping farm and woodlands and head northwest towards Kansas City and ending in Pleasant Hill, MO.



# 12 GOOD FOOD EATS HERE

|                                   |                              |                |
|-----------------------------------|------------------------------|----------------|
| Applebee's .....                  | 3320 W. Broadway .....       | (660) 827-9910 |
| Arby's Restaurant .....           | 2701 W. Broadway .....       | (660) 829-4072 |
| Asia Hibachi.....                 | 1975 W. Broadway .....       | (660) 829-2226 |
| Asian Buffet .....                | 3404 W. Broadway .....       | (660) 826-8886 |
| Bandana's Bar-B-Q .....           | 2909 W. Broadway .....       | (660) 851-0610 |
| Bar-B-Que Pit Stop .....          | 1022 Thompson Blvd. ....     | (660) 826-3635 |
| Best Donuts .....                 | 2103 S. Limit .....          | (660) 281-0077 |
| Brick Front Grill .....           | 3007 West Broadway .....     | (660) 530-4052 |
| Buffalo Wild Wings .....          | 4401 Wisconsin Ave .....     | (660) 829-0350 |
| Burger King .....                 | 1101 S. Limit .....          | (660) 826-1411 |
| Casey's Carry Out Pizza .....     | 1601 E. Broadway.....        | (660) 826-0722 |
| Casey's Carry Out Pizza.....      | 716 W. 16th Street.....      | (660) 827-3811 |
| China King Restaurant.....        | 1511 S. Limit .....          | (660) 826-4668 |
| Clara's North 65 Café .....       | 22938 N. Hwy 65 .....        | (660) 829-3322 |
| Colton's Steak House & Grill..... | 4101 W. Broadway .....       | (660) 829-3737 |
| Country Kitchen.....              | 2001 S. Limit .....          | (660) 826-2001 |
| Dairy Queen .....                 | 1811 S. Limit .....          | (660) 826-2301 |
| Daisy Dukes & Cowboy Boots ....   | 21744 West Hwy 50 .....      | (660) 826-5500 |
| Denny's.....                      | 2401 W. Broadway .....       | (660) 829-3704 |
| Dickie Doo Bar-B-Que .....        | 4860 S Limit Ave .....       | (660) 827-3344 |
| Domino's Pizza .....              | 3200 S. Limit .....          | (660) 829-3030 |
| El Espolon .....                  | 3000 S. Limit (Hwy 65) ..... | (660) 829-1723 |
| El Tapatio .....                  | 3000 S. Limit .....          | (660) 827-5553 |
| End Zone .....                    | 3129 W. Broadway .....       | (660) 829-3530 |
| Fitter's on 5th Street .....      | 500 South Ohio. ....         | (660) 827-6500 |
| Fortune Palace .....              | 3005 S. Limit .....          | (660) 826-3299 |
| Freddy's .....                    | 3171 W. Broadway.....        | (660) 826-5626 |
| Golden Corral.....                | 2004 W. Broadway .....       | (660) 829-1358 |
| Goodcents Fresh Deli Subs.....    | 3400 W. Broadway .....       | (660) 826-7900 |
| Goody's Steak Burgers .....       | 901 S. Limit .....           | (660) 826-2828 |
| Hardee's Family Restaurants ..... | 715 E. Broadway.....         | (660) 826-3559 |
| Hardee's Family Restaurants ..... | 1400 S. Limit .....          | (660) 826-0370 |

# GOOD FOOD EATS HERE 13

|   |                               |                 |
|---|-------------------------------|-----------------|
| Ivory Grille.....                         | 317 S. Ohio.....              | (660) 829-0060  |
| <i>Inside the Historic Hotel Bothwell</i> |                               |                 |
| Jerry McGuire .....                       | 3501 W. Broadway Blvd. ....   | (660)- 951-1118 |
| Jimmy John's.....                         | 2923 W. Broadway Blvd .....   | (660) 827-5646  |
| Kehde's Barbeque .....                    | 20th & Limit Ave .....        | (660) 826-2267  |
| Kentucky Fried Chicken .....              | 1513 S. Limit Ave .....       | (660) 826-6912  |
| LeMaire's Cajun Seafood House...          | 3500 W. Broadway Blvd .....   | (660) 827-3563  |
| Little Big Horn Cattle Co.....            | 1629 W. Main .....            | (660) 826-8194  |
| Little Caesar's Pizza .....               | 2125 W. Broadway Blvd .....   | (660) 826-9450  |
| Long John Silver's/A&W .....              | 922 S. Limit Ave.....         | (660) 826-0880  |
| Malone's Irish Pub.....                   | 404 S. Ohio.....              | (660) 951-1500  |
| Mazzio's Italian Eatery.....              | 1613 S. Limit Ave.....        | (660) 827-9999  |
| McDonald's .....                          | 3101 W. Broadway Blvd.....    | (660) 827-6411  |
| McDonald's .....                          | 1611 S. Limit .....           | (660) 827-2733  |
| Mighty Melt Sandwich & Spud Shop..        | 2402 W. Broadway Blvd ....    | (660) 827-2290  |
| Ozark Coffee Co. & Roastery.....          | 106 W. 2nd .....              | (660) 829-0393  |
| Panera Bread Co. ....                     | 3171 W. Broadway Blvd.....    | (660) 827-7254  |
| Papa Jake's Donut Shop .....              | 1200 W. 16th. ....            | (660) 826-6176  |
| Papa John's Pizza .....                   | 2915 W. Broadway Blvd.....    | (660) 826-6698  |
| Papa Murphy's.....                        | 3040 W. Broadway Blvd.....    | (660) 827-5551  |
| Perkin's Family Restaurant .....          | 1100 S. Limit Ave .....       | (660) 826-1491  |
| Pizza Hut.....                            | 1422 S. Limit Ave .....       | (660) 827-1111  |
| Russell Stover Chocolates.....            | 1021 S. Limit Ave .....       | (660) 829 0910  |
| Sedalia Main Street Cafe .....            | 111 S. Grand Ave. ....        | (660) 553-56191 |
| Small Cakes .....                         | 3040 W. Broadway Blvd. ....   | (660) 951-1070  |
| Sonic Drive-In.....                       | 2800 S. Limit Ave .....       | (660) 829-1211  |
| Sonic Drive-In.....                       | 300 W Broadway Blvd .....     | (660) 826-1114  |
| Starbuck's.....                           | 3040 W. Broadway Blvd.....    | (660) 829-0296  |
| State Fair Carousel Dining .....          | 3120 S. Limit Ave .....       | (660) 829-6100  |
| SFCC Food Service .....                   | 3201 W. 16th.....             | (660) 530-5800  |
| Steak & Shake.....                        | Main Street & W. Hwy 50 ..... | (660) 851-2264  |
| Subway.....                               | 2750 S. Limit Ave .....       | (660) 829-4439  |
| Subway.....                               | 3040 W. Broadway Blvd.....    | (660) 826-1964  |



# 14 GOOD FOOD EATS HERE

|                               |                              |                |
|-------------------------------|------------------------------|----------------|
| Subway.....                   | 100 W. Broadway Blvd.....    | (660)826-1120  |
| TO5C.....                     | 12508 Longwood Road .....    | (660) 864-7461 |
| Taco Bell .....               | 820 S. Limit Ave.....        | (660) 826-9147 |
| Tacos El Charro.....          | 2121 W. Broadway Blvd. ....  | (660) 553-5206 |
| Wendy's .....                 | 1301 S. Limit Ave.....       | (660) 827-2220 |
| Wood's Supermarket Deli ..... | 701 East Broadway Blvd ..... | (660) 826-3509 |
| Yummy's Donuts.....           | 209 E. Broadway Blvd .....   | (660) 553-5190 |

## MUST DO CALENDAR

**For additional details consult the CVB website:**

**[www.visitsedaliamo.com](http://www.visitsedaliamo.com)**

### JANUARY

Brandon Reese • Recent Ceramics — Daum Museum  
Love Letters • Wally McCown Art Show —Hayden  
Liberty Center Visual Arts Gallery  
Bodee's Motor Sports Swap Meet — MSF

### FEBRUARY

Brandon Reese • Recent Ceramics — Daum Museum  
Love Letters • Wally McCown Art Show —Hayden  
Liberty Center Visual Arts Gallery  
Silent Films — Hayden Liberty Center Performing  
Arts Center  
Sedalia Symphony — Heckart Performing Arts Center  
SFCC Theatre  
Chocolate Crawl — Downtown Sedalia  
RK Shows gun & Knife Show — MSF  
AG Expo — MSF



Motorcycle Bike Show & Trade —MSF  
Cabin Fever Sports Show — MSF  
NFPBR Bullriding — MSF  
NFPB IPRA Professional Rodeo —  
MSF



### MARCH

Brandon Reese • Recent Ceramics — Daum Museum  
Wine & Brews Stroll on the Avenues — Downtown  
Sedalia  
Cashore Marionettes — Hayden Liberty Center  
Performing Arts Center

# MUST DO CALENDAR 15

Sedalia Visual Art Association Show — Hayden Liberty Center Visual Arts Gallery

Bridal and Party Fair — MSF

Show Me Crafters Show — MSF

Boone County Draft Horse & Mule Sale - MSF

St. Patrick's Day Parade & Bed Races, Pub Crawl & Concert — Downtown Sedalia

## APRIL

Brandon Reese • Recent Ceramics — Daum Museum

Student Art Show — Daum Museum

Broadway's Next Hit Musical ° Enchanted Forest — Hayden Liberty Center Performing Arts Center  
SFCC Musical

Sedalia symphony — Heckart Performing Arts Center

D.A.R.E. Motor Head Madness Car Show — Downtown Sedalia

Speedway Races — MSF

MOKAN Border Bonanza Show — MSF

3rd Thursday on the Avenues — Downtown Sedalia



## MAY

Brandon Reese • Recent Ceramics — Daum Museum

Student Art show — Daum Museum

Scott Kirby Art show — Hayden Liberty Center Visual Arts Gallery

Blacksmith Assoc of MO Trade show - MSF

Bijou at Bothwell Lodge

Speedway Races — MSF

3rd Thursday on the Avenues — Downtown Sedalia

First Friday — Katy Depot

## JUNE

Summer Shows — Daum Museum

Scott Kirby Art Show — Hayden Liberty Center Arts Gallery

Scott Joplin International Ragtime Festival – Hayden Liberty Performing Arts Center / Downtown

Sedalia Concert Band – Liberty Park

Dream Factory Truck & Tractor Pull – MSF

Midwest Stud Ram Show - MSF

First Friday — Katy Depot

3rd Thursday on the Avenues — Downtown Sedalia



# 16 MUST DO CALENDAR

## JULY

Summer Shows — Daum Museum

Barbara Cooney Art Show — Hayden Liberty Center  
Visual Art Gallery

“Annie” JR. — Hayden Liberty Center Performing Arts  
Center

July Fourth Celebration – MSF

National Derby Rally Championship — MSF

R. Woolery Memorial Pow Wow - MSF

First Friday — Katy Depot

3rd Thursday on the Avenues —  
Downtown Sedalia



## AUGUST

Summer Shows — Daum Museum

Barbara Cooney Art Show — Hayden  
Liberty Center Visual Art Gallery



### MISSOURI STATE FAIR -

*Celebrate the traditions of family farms  
and experience the magic of new  
millennium entertainment. Information  
call 800-422-3247 or [www.mostate-fair.com](http://www.mostate-fair.com).*

First Friday — Katy Depot

3rd Thursday on the Avenues — Downtown Sedalia

## SEPTEMBER

Vicki Weaver Art Show — Hayden Liberty Center  
Visual Arts Gallery

Giesela Colón, Artist Lecture — Daum Museum

Bijou at Bothwell Lodge

Speedway Races — MSF

Boone County Draft Horse & Mule Sale – MSF

First Friday — Katy Depot

3rd Thursday on the Avenues — Downtown Sedalia

## OCTOBER

Vicki Weaver Art Show — Hayden Liberty Center  
Visual Arts Gallery

Giesela Colón, Artist Lecture — Daum Museum

Daum Escape — Daum Museum

Speedway Races — MSF

American Horseman Challenge – MSF

First Friday — Katy Depot

3rd Thursday on the Avenues — Downtown Sedalia



# MUST DO CALENDAR 17

## NOVEMBER

Giesela Colón, Artist Lecture — Daum Museum  
Mick Leuhrman Art Show — Hayden Liberty Center  
Visual Arts Gallery  
Daum Escape — Daum Museum  
American Black Hereford National  
Show & Sale - MSF  
Show Me Crafters Show – MSF  
Thanksgiving Lighting & Fireworks -  
Downtown



## DECEMBER

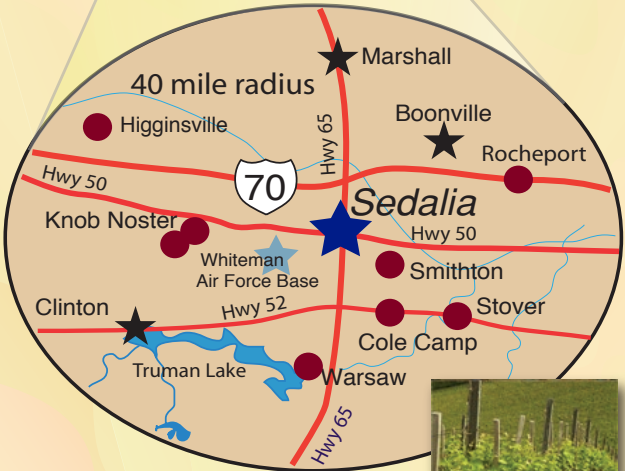
Giesela Colón, Artist Lecture —  
Daum Museum  
Daum Escape — Daum Museum  
Holiday Arts & Craft Show - SFCC  
Jingle on the Green – State Fair Community  
College Campus  
Holiday Concerts – SFCC  
Christmas Parade - Downtown



*Katy Depot in the snow.*

*© Moonlight 10 Photography*

# 18 AREA ATTRACTIONS



|                    |           |
|--------------------|-----------|
| Arrow Rock         | 50 miles  |
| Lake of the Ozarks | 60 miles  |
| Jefferson City     | 61 miles  |
| Columbia           | 67 miles  |
| Kansas City        | 88 miles  |
| Springfield        | 118 miles |
| Branson            | 168 miles |
| St. Louis          | 191 miles |

## ● Wineries

- Stover: Buffalo Creek Winery [buffalocreekwinery.com](http://buffalocreekwinery.com)  
 Smithton: Wildlife Ridge Winery [wildliferidgewinery.com](http://wildliferidgewinery.com)  
 Warsaw: Primitive Old Crow and Winery  
 Rocheport: Les Bourgeois Vineyards [www.missouriwine.com](http://www.missouriwine.com)  
 Cole Camp: Eichenberg Winery [eichenbergwinery.homestead.com](http://eichenbergwinery.homestead.com)  
 Knob Noster: Bristle Ridge Winery [brvwine.com](http://brvwine.com)  
 Montserrat Vineyards Kin [montserratvineyards.com](http://montserratvineyards.com)  
 Higginsville: Arcadian Moon [arcadianmoon.com](http://arcadianmoon.com)

## Campgrounds

**Countryside RV Park** 5464 HWY 65 South, (817) 564-3036 - RV sites, electricity, toilet facilities, showers, handicap accessible, picnic tables, dump station, storm shelter, laundry, meeting room.

**Chaplin's RV Park** 4000 W. Main Street, (660) 826-8549, 660-596-2842 - Pull thru sites, 30-50 amp electricity, open year round.

**Happy Acres RV Park** 22527 HWY 65 North, (660) 826-4046 - Call for information.

**Missouri State Fairgrounds** HWY 65 & 16th Streets, (660) 530-5600 - RV sites, tent sites, electricity, toilet facilities, showers, store nearby, handicap accessible, near the Katy Trail State Park.

## Transportation

Sedalia Regional Airport — 1900 East Boonville  
(660) 826-4128 Hours: 7 a.m. – 6 p.m. daily

Amtrak — 1-800-USA-RAIL (1-800-872-7245)

American Auto Rental — 2101 South Limit • (660) 827-5200

Enterprise Rent-A-Car — 800-736-8222 • (660) 827-3575

Sedalia City Bus — 107 W. Pacific St. • (660) 827-2611

The Bus — (660) 827-2611

ETS Taxi — 660-624-4120 • 1-800-544-2056

## Radio Stations

**KPOW 97.1 FM** – Classic Rock

**KDRO 1490 AM** – Country

**KDRO 97.7 FM** – Classic Rock

**KSIS 1050 AM** – News / Talk

**KSDL 92.3 FM** – Rock

**KKKX 105.7** – Country

## Weather

Weather Forecast — (660) 826-5747

Road Information — 1-800-222-6400

## Emergency

Emergencies — 911

Cellular: \*55 for Highway Patrol

Bothwell Regional Health Center — (660) 826-8833

AFC Urgent Care — (660) 951-1091

Sedalia Police Department — (660) 826-8100

Missouri State Highway Patrol — (660) 530-5515

Pettis County Sheriff's Dept. — (660) 827-0052

**American Inn** 1217 S. Limit, 660-826-2488 - 30 rooms, ADA accessible.

**Best Western** 3120 S. Limit 660-826-6100 •

877-826-6101 - 117 rooms, restaurant, hot breakfast, lounge, indoor pool, meeting rooms, group rates, ADA accessible.

**Comfort Inn** 3600 W. Broadway, 660-829-5050, 800-228-5150 - 76 rooms, hot breakfast, indoor pool, meeting rooms, group rates, guest computer, hot tub, newly remodeled, on-site laundry facilities, high speed internet, individual microwaves and mini-fridge, HDTV, ADA accessible.

**Econo Lodge Truman Inn** 3501 W. Broadway, 660-826-8400 - 116 rooms, restaurant, lounge, banquet room, ballroom, indoor pool, hot tub, sauna, meeting rooms, group rates, ADA accessible.

**Holiday Inn Express & Suites** 4001 W. Broadway, 660-826-4000 800-465-4329 - 76 rooms, hot breakfast, indoor pool, hot tub, business center, fitness center, meeting rooms, call for group rates, ADA accessible.

**Hotel Bothwell** 103 E. Fourth, 660-826-5588 - 48 rooms, restaurant, continental breakfast, lounge, meeting rooms, group rates, ADA accessible. Listed on the National Registry of Historic Places.

**Hotel State Fair Motel 6** 3402 W. Broadway, 660-827-5890 83 rooms, group rates, high-speed wireless, ADA accessible, large vehicle parking.

**Budget Inn** 4710 S. Limit, 660-826-8662 - 13 rooms. Call for more information.

**Sunset Motel** 3615 S. Limit, 916-284-2100  
[www.sunsetmotelsedalia.com](http://www.sunsetmotelsedalia.com) - 22 rooms, free WiFi

**Super 7** 5650 S. Limit, 660-827-0215, 800-675-2518 - 24 rooms, group rates. Shuttle service to local airport and Amtrak train station.

## B & B

**Georgetown Country View Estates** 22378 Highway H, 660-826-7468 - Quiet get-a-way in a historic location! Featuring continental/full breakfast, TV, pool, hot tub, exercise room, pool table, and private baths in each room.



## National Historic District

-  **Amtrak Station**
-  **Boonslick Regional Library**
-  **Liberty Center Association for the Arts**
-  **Pettis Co. Court House**
-  **Pettis Co. Sheriff Department**
-  **Rose Noland Black History Library**
-  **Scott Joplin Historical Marker**
-  **Sedalia Municipal Bldg./Police Dept.**
-  **Sedalia Public Library**

**H** Bothwell Regional Health Center

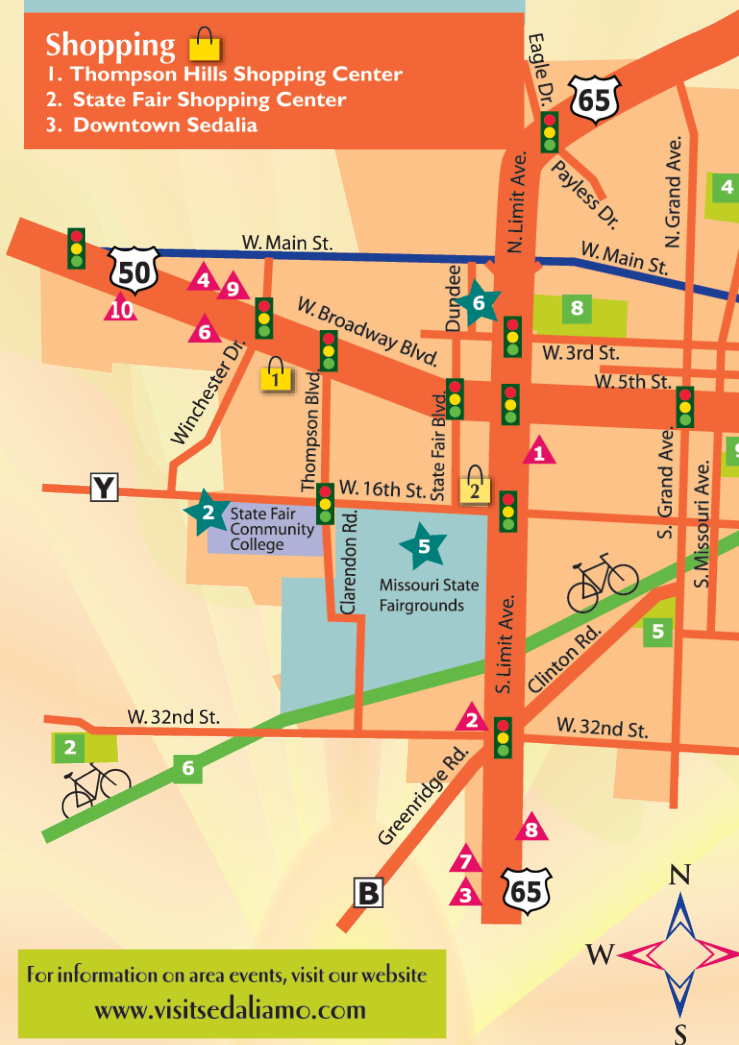
**PO** United States Post Office

## Shopping

1. Thompson Hills Shopping Center
2. State Fair Shopping Center
3. Downtown Sedalia

## Attractions

1. Bothwell Local
2. Daum Museum
3. Downtown H
4. Katy Depot
5. Missouri Sta
6. Pettis Co. Hi



For information on area events, visit our website  
[www.visitsedaliamo.com](http://www.visitsedaliamo.com)



idge (6 miles North on Hwy 65)  
um of Contemporary Art  
Historic District  
Heritage Site  
Fairgrounds  
Historical Society Museum

## Lodging

1. American Inn
2. Best Western
3. Budget Host Super 7
4. Comfort Inn
5. Hotel Bothwell
6. Truman Inn
7. Stardust Motel
8. Sunset Motel
9. Super 8 Motel
10. Holiday Inn Express
11. Georgetown Country View Estates (west)
12. Georgetown Inn (west)

## Parks

Sedalia Parks  
Department  
660-826-4930

1. Centennial Park
2. Clover Dell Park
3. Housel Park
4. Hubbard Park
5. Katy Park
6. Katy Trail State Park
7. Leisure Park
8. Liberty Park
9. Vermont Park



East/West Boundary is Ohio Ave.  
North/South Boundary is Main St.



This guide is produced, printed and distributed by the Sedalia Convention and Visitors Bureau and all contents are © copyrighted. Reproduction of the editorial or graphic content in any manner is strictly prohibited without expressed written permission.



Sedalia Convention & Visitors Bureau  
Sedalia Welcome Center - Historic Katy Depot  
600 East 3rd Street  
Sedalia, MO 65301

1800-827-5295

[www.visitsedaliamo.com](http://www.visitsedaliamo.com)

*Wish you were  
here!*

